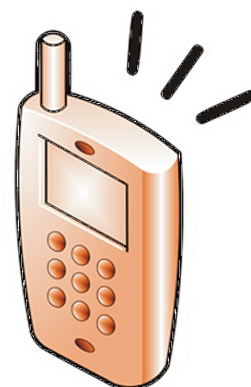


## Automatic Intelligent Alarm Dispatch for Safety, Security and Situation Awareness

Alarm Handling  
Alarm Escalation  
Lone Worker Protection  
Panic Alerting  
Indoor Positioning



## All on your Radio or Phone

**ZONITH Alarm Control System** dispatches alarms from any alarm source to your digital radio, mobile phone, pager and/or email account.

You can control who handles the alarms through the watch schedule functionality - where on-call employees with competencies matching the needs of the alarm will be called. This makes for a safe and efficient workplace!

### You get a

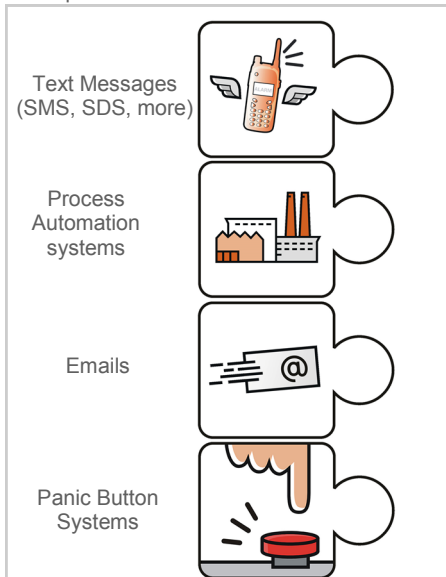
- ▶ **More Efficient Workplace**  
Faster Alarm Handling  
And more direct response
- ▶ **Safer Workplace**  
Lone Worker Protection  
Panic Button System  
Indoor Positioning

ZONITH Alarm Control System is a modular system where you decide which alarms should be monitored, and how the alarms should be sent to the receiving person. You can also add alive check and indoor positioning modules for even more functionality and safety.

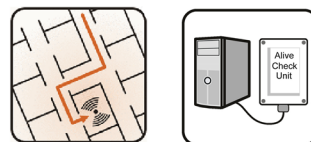
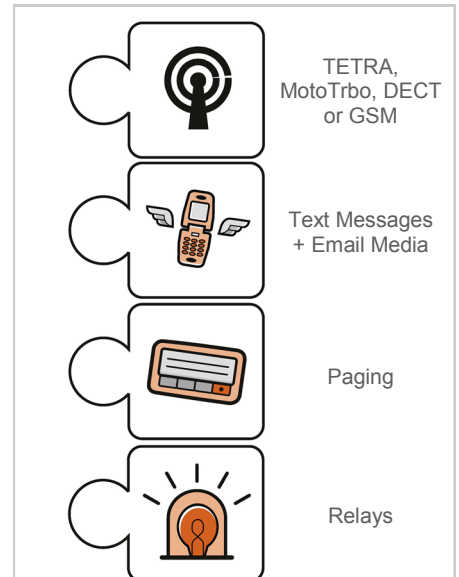
## Choosing Your Solution

### Modularity is Flexibility

Pick up the alarms from



Send out the alarms via



#### Alarm Source 'Listeners'

Listeners translate the language of the different alarm sources to a language that the ZONITH Alarm Control System can use.

Other ways to channel in the alarms are through IO, databases, command lines and emergency center dispatchers.

#### Extra Modules

**ZONITH Indoor Positioning Module:** Bluetooth based system enabling you to locate persons and assets indoors.

**ZONITH Alive Check Module:** Warns lone workers if the protection system is out of order.

#### Alarm Dispatch 'Media'

Alarm Dispatch Media decide how you get the alarms from the ZONITH Alarm Control System to the recipient(s) of the alarm.

You can use more media in one solution - some for critical alarms, some for back up and some for uncritical alarms.

### Typical Usage

- ▶ Production Plants
- ▶ Lone Worker Protection
- ▶ Office Panic Button Systems
- ▶ Emergency Services
- ▶ Building Management

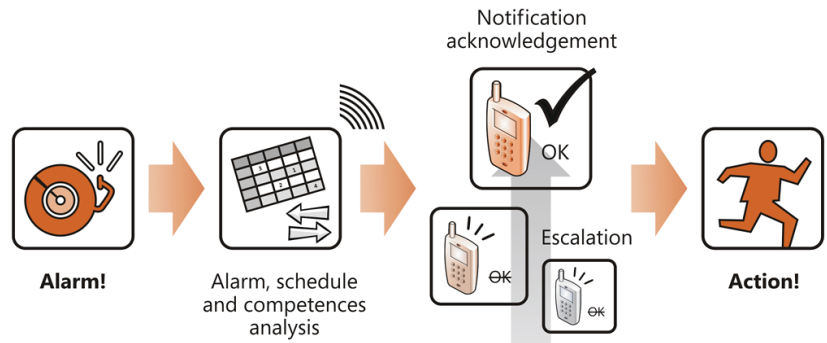
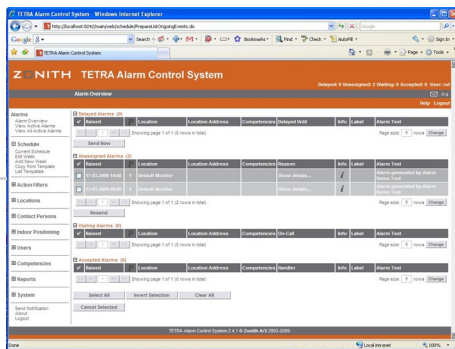
### Other Zonith Products

- ▶ **ZONITH Indoor Positioning Module**  
Bluetooth based - locates people and assets
- ▶ **Remote Telemetry and Control Unit**  
Remote control and monitoring of technical Installations through your digital radio.

The ZONITH Alarm Control System runs in a web browser and has functionalities like the scheduler, which keeps track on individual time schedules, competencies and back-up functionality and the alarm interface. But the interface you use and need daily is the one on your radio.

## Right Person - Right Time

### Alarm Handling



**Browser Based**  
ZONITH Alarm Control System runs in a browser, which gives you easy access, and the possibility to manage alarms from any location if authorized.

**Competencies**  
Alarms can have certain properties. When an alarm is activated the ZONITH Alarm Control System automatically matches these properties to the competencies available among employees in the watch schedule.

**Escalation**  
It is crucial that alarms are taken care of. By assigning backup employees you can rest assured the alarm will be taken care of if the primary employee is not able to. The alarm will be escalated until it is acknowledged.

### Scheduler

Start	End	Primary	Backup 1	Backup 2	Handover		
08:00	16:30	Christian Hansen	John McDonald	Peter Smith	Handover	SDS	Cancel
12:00	20:30	Peter Smith	John McDonald	NONE	Handover	SDS	Cancel

On-call hours for the individual employee. Different week schedules can be made, saved and repeated, making planning ahead easy.

The drop down menu contains all names. Just select the employee you wish for this slot.

Back-ups can be assigned, so you know where alarms go, if the primary does not accept or react to the alarm.

If you need to hand over a shift from one employee to another, you just change the name, choose the media (In this case TETRA SDS text message), and press "handover".

### Alarm Interface

Waiting Alarms (1)							
Raised	Location	Location Address	Competencies	On-Call	Info	Label	Alarm Text
<input type="checkbox"/> 04-05-21 07 10:53	Platform D		View	Mark Anderson			Fire Main platform on fire

Alarms can be in four 'states' which can be seen in the ZONITH Alarm Control System browser. The states are Delayed, Unassigned, Waiting and Accepted.

Physical location of alarm.

Here you can see what competencies are necessary to solve the alarm.

Person contacted for this specific alarm.

The text received by the recipient(s) of the alarm.

ZONITH Alarm Control System is a versatile system, with a wide variety of possibilities. Lone worker protection, automatic alarm handling, panic button systems, automatic hotel task distribution are only a small selection of a long list of usages.

## Benefits & Usages

### Good for Business

The ZONITH Alarm Control System has shown through many different types of installations, that it is very good for the efficiency in the work places in which it is used. So good in fact, that the return of investment time, in some cases, can run as low as 6 months.

### World Wide Access and Cooperation

Because the ZONITH Alarm Control System is browser based, all you need is internet access, and you can edit schedules, check on indoor positions and follow alarms.

Through some of our installations Zonith has been a major contributing factor in creating some of Europe's largest private TETRA networks connected by IP.

### Employee Protection

The ZONITH Alarm Control System is ideal for different safety purposes. It is, among other things, used for protecting lone workers in power plants and for protecting councellors in job centres with panic button notification.

Lone Workers can be found quickly, if something happens to them, even if they are not capable of raising the alarm themselves.

### System Benefits

- ▶ **Higher Efficiency:** Usually users of ZONITH Alarm Control System experience a dramatic raise in efficiency, and ROI-time can run as low as 6 months in some instances.
- ▶ **Better Safety:** ZONITH Alarm Control System is ideal for lone worker protection with the Zonith modules and the build-in functionalities in radios.

### Key Features

- ▶ Active, Centralized and Automated 24/7
- ▶ Handles Any Alarm from Any Source
- ▶ Watch Schedule Integration
- ▶ System Alive Checker
- ▶ Prioritizes Alarms for Optimal Use of Resources
- ▶ Notification via TETRA, MOTOTRBO, DECT, GSM, POCSAG Pager and E-mail.

*„We needed a modern communication system and we were overwhelmed by the value added by choosing TETRA. The rise in efficiency achieved by receiving technical alarms as radio text messages is significant.“*

*Jari Delin, Project Manager, Billerud Paper Plant*

### Reseller

### Zonith A/S

Zonith was founded in 2000 by a group of former Nokia engineers, with the ambition to make alarm handling easier and more cost effective.

Zonith software is a part of solutions worldwide, and is used in businesses as different as Power Plants, Office Buildings, Production Plants, National Emergency Services and more.

Version 2011-12-01