

DATA SHEET

WAVE WORK GROUP COMMUNICATIONS:
ADVANCED DESKTOP COMMUNICATOR



WAVE™ ADVANCED DESKTOP COMMUNICATOR

FEATURE RICH COMMUNICATIONS CONSOLE FOR INDUSTRY STANDARD PCs, OFFERING HIGH CAPACITY CHANNEL MANAGEMENT WITH ON-THE-FLY CHANNEL PATCHING

The WAVE Advanced Desktop Communicator is a powerful software application designed to provide many of the capabilities associated with dispatch consoles deployed for mission-critical public safety, military and critical infrastructure organisations.

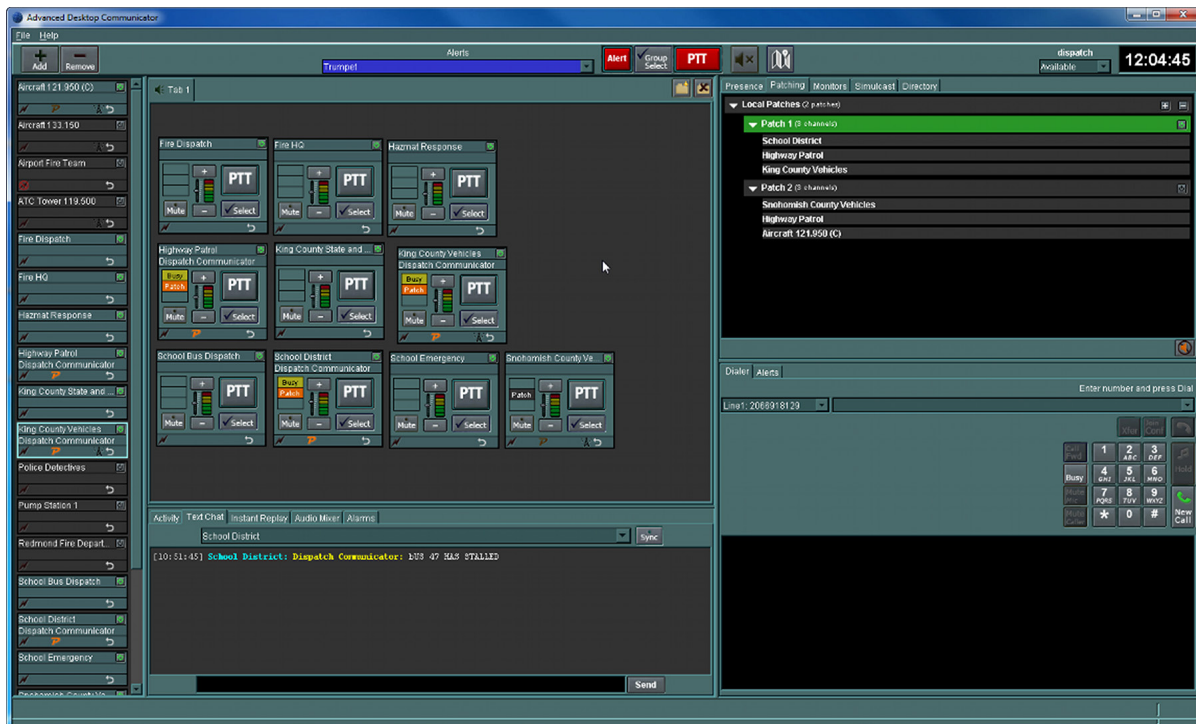
Using an industry-standard desktop or laptop computer and a microphone-equipped headset, the Advanced Desktop Communicator lets an operator create and manage a large number of communications

channels, create and tear down patches, manage user access to channels, access radio alarms and use unit IDs to identify individual radios and users.

The Advanced Desktop Communicator connects to a WAVE Management Server for security and configuration, a Registrar for telephony, any number of Channels for communication, and through those Channels to other users who may be using other WAVE desktop or mobile applications.

DATA SHEET

WAVE WORK GROUP COMMUNICATIONS: ADVANCED DESKTOP COMMUNICATOR



IT'S 100% SOFTWARE

Advanced Desktop Communicator is the only true software-only communications console solution on the market today. There is no specialised hardware requirement other than a Windows-based PC, and it can be used anywhere there is a network connection.

DESIGNED FOR SCALABILITY

Build as large a communications dispatch function as your organisation requires with no restrictions on scalability. Whether you need one or one hundred positions, located wherever you need them, Advanced Desktop Communicator gives you the ability to communicate with your teams anywhere in the world on as many radio talk groups, telephone connections or mobile devices as you need.

FEATURE RICH

Advanced Desktop Communicator provides nearly all of the expected communications console functions that military, public safety, government and commercial enterprises require. Multiple radio channels, telephone calls and other communications systems can be patched together with just a few clicks of a mouse. Activity displays, audio recording and instant replay give operators a complete session history for archiving and audit trail purposes

ENHANCED DISPLAY OPTIONS

Advanced Desktop Communicator allows you to add other applications to your console environment via optional pop-up panels that can be used to provide capabilities such as mapping, CCTV, etc. Text messaging between multiple WAVE consoles and other WAVE-enabled applications improves situational awareness and operator effectiveness.

IDEAL FOR DISASTER RECOVERY

Organisations can deploy, redeploy and provision instantaneous back-up services using the Advanced Desktop Communicator. Whether operating from pre-configured locations or from unprepared sites, operators can manage communications services from any location with an available IP connection.

CONNECT WITH OTHER WAVE APPLICATIONS

Advanced Desktop works with all our WAVE Communicators including Mobile, Desktop, Web, SharePoint and Lync Communicators, giving our customers the broadest range of options for managing communications between the communications centre and the field in the most cost-effective manner possible.

DATA SHEET

**WAVE WORK GROUP COMMUNICATIONS:
ADVANCED DESKTOP COMMUNICATOR**

RADIO FUNCTIONS	
Transmit (PTT)	✓
Transmit All (broadcast)	✓
Instant Transmit	✓
Monitor	✓
Select	✓
Simul-Select	✓
Maximum Channels / Talkgroups	Unlimited
Maximum Remote No. Users	Unlimited
Group or Private Calls	✓
Per Channel Volume Controls	✓
Mute / All Mute	✓
Per-Channel Call History	✓
Pre-Defined, Configurable Alert Tones	✓
Dynamic Group Creation	✓
Channel Cross-Mute	✓
Patch (radio-radio)	✓
PTT ID/Alias	✓
Instant Call Dialing	✓

TELEPHONY FUNCTIONS	
PBX Integration	✓
Maximum No. of Lines	8
Conferencing	✓
Memory / Speed Dial	✓
Answer / Release	✓
Mute	✓
Hold	✓
Set busy status	✓
Call Forward / Transfer	✓
Last number redial	✓
Caller ID/alias	✓
Patch/Conference (radio-telephone)	✓

SYSTEM FUNCTIONS	
Touchscreen	✓
User Configurable GUI	✓
Status & Presence	✓
Location Mapping option	✓
Console-to-Console Intercom	✓
Console-to-Field Text Messaging	✓
3rd Party Video Support	✓
Emergency / Alarms	✓
TX/ RX on Multiple Channels	✓
Audio Routing Between Headset & Speaker	✓
Master Volume Control	✓
VU Meter	✓
Instant Recall Recorder (IRR)	✓
Long-Term Recording	✓
Per-Console Call History	✓
Status Messages	✓
Auxiliary I/O controls	✓
Group Text With Other WAVE Applications	✓

RADIO SYSTEM INTEGRATION	
Gateway Interfaces	Multiple
Data Interfaces	ASTRO 25, MOTOTRBO
Radio System Support	Motorola ASTRO 25 with ISSI wireline interface Motorola ASTRO 25 and TETRA with MOTOBRIDGE wireless interface Motorola MOTOTRBO with wireline interface Other vendor Project 25 (P25) and non-P25 systems with MOTOBRIDGE wireless interface
P25 ISSI, FSI, CAI	✓
Tone / SELCAL Control	✓
DTMF, 2-Tone Paging	✓
Voting	✓
Morse Code	✓

IT INTEGRATION	
IP Network Integration	✓
Integration with Unified Comms Platforms	✓
Supports IP Multicasting	✓
Multicast & Unicast Bridging	✓
Domain Interoperability (Federation)	✓
Active Directory Support	✓
End-to-End Encryption	✓
Web-Based Management Tool	✓
Monitoring & Reporting	✓
Dynamic Updates	✓
System Security	✓

OTHER	
Supported CODECs	23
Remote Dispatch via VPN	✓
End-to-End VoIP	✓
Custom Hardware Required	None
Max Positions Supported	Unlimited
Remote Access ("dispatch from anywhere")	✓
Certifications	US Army JITC

SYSTEM REQUIREMENTS

- Operating System:** Windows 8 / 8.1
Windows 7 Enterprise 32Bit or 64Bit
- Java Runtime:** 1.6.0 or above
- CPU:** 2.0 GHz x-86 based processor
- Internal Memory:** 1 GB RAM
- Available Storage:** 200 MB
- Network Interface Controller:** 100 Mbps x
- Peripherals** 2 speakers, 1 microphone

DATA SHEET

WAVE WORK GROUP COMMUNICATIONS:
ADVANCED DESKTOP COMMUNICATOR



ADVANCED DESKTOP COMMUNICATOR IS AVAILABLE WITH WAVE 5000

WAVE 5000 can help you build a more connected and manageable PTT communications environment. From two-way radios to smartphones, laptops to landlines, tablets to rugged handhelds, your personnel can use the devices they already have and the networks they already subscribe to and PTT with other teams and individuals both inside and outside of your organization.

Networks:	Public or Private 3/4G LTE data network, WiFi, enterprise LAN/WAN
Devices:	Android and Apple smart devices, custom handhelds like the Motorola LEX L10, PCs, desktop phones
WAVE PTT Applications:	WAVE Mobile Communicator WAVE Advanced Desktop Communicator WAVE Desktop Communicator WAVE Web Communicator WAVE Communicator for Microsoft Lync WAVE Communicator for Microsoft SharePoint
Radio Integration(s):	Motorola ASTRO 25 with ISSI wireline interface Motorola ASTRO 25 and TETRA with MOTOBRIDGE wireless interface Motorola MOTOTRBO with wireline interface Other vendor Project 25 (P25) and non-P25 systems with MOTOBRIDGE wireless interface
Capacity:	Up to 3,000 end-points

To learn more about WAVE Advanced Desktop Communicator, contact your Motorola representative or visit motorolasolutions.com/WAVE.

Motorola Solutions UK, Ltd, Jays Close, Viabes Industrial Estate, Basingstoke, Hampshire, RG22 4PD United Kingdom motorolasolutions.com

MOTOROLA, MOTO, MOTOROLA SOLUTIONS and the Stylised M Logo are trademarks or registered trademarks of Motorola Trademark Holdings, LLC and are used under licence. All other trademarks are the property of their respective owners. © 2015 Motorola Solutions, Inc. All rights reserved.

