

MOTOTRBO™
CAPACITY MAX

MOTOTRBO CAPACITY MAX



- Next generation trunking solution
- Increased capacity and scalability
- Enhanced performance and feature-set
- Improved management and monitoring
- DMR Tier III Mode of Operation



CAPACITY, COVERAGE AND CONTROL

MOTOTRBO SYSTEMS PORTFOLIO



SHIPPING MAY

IP SITE CONNECT

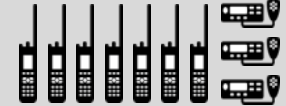
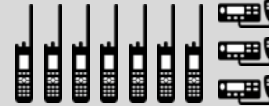
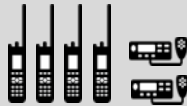
CAPACITY PLUS
(Single/Multi-Site)

CAPACITY MAX

CONNECT PLUS

CONVENTIONAL

TRUNKING



1 – 15 SITES

1 – 15 SITES

1 – 15 SITES

1 – 250 SITES

UP TO 200 USERS*

UP TO 1600 USERS/SITE*

UP TO 3000 USERS/SITE*

UP TO 3000 USERS/SITE*

BASELINE
COVERAGE

COST EFFECTIVE
CAPACITY

COVERAGE,
CAPACITY
AND CONTROL

EXCEPTIONAL
COVERAGE

SUPPORTING STANDARDS



- Motorola Solutions is a strong supporter of industry standards
- We actively participate in all 3 major LMR standards: DMR, TETRA and APCO P25
- Founding member of DMR Association
- MOTOTRBO was first DMR solution compliant with Tier II mode of operation
- MOTOTRBO Capacity Max is compliant with DMR Tier III mode of operation



SYSTEM TOPOLOGY

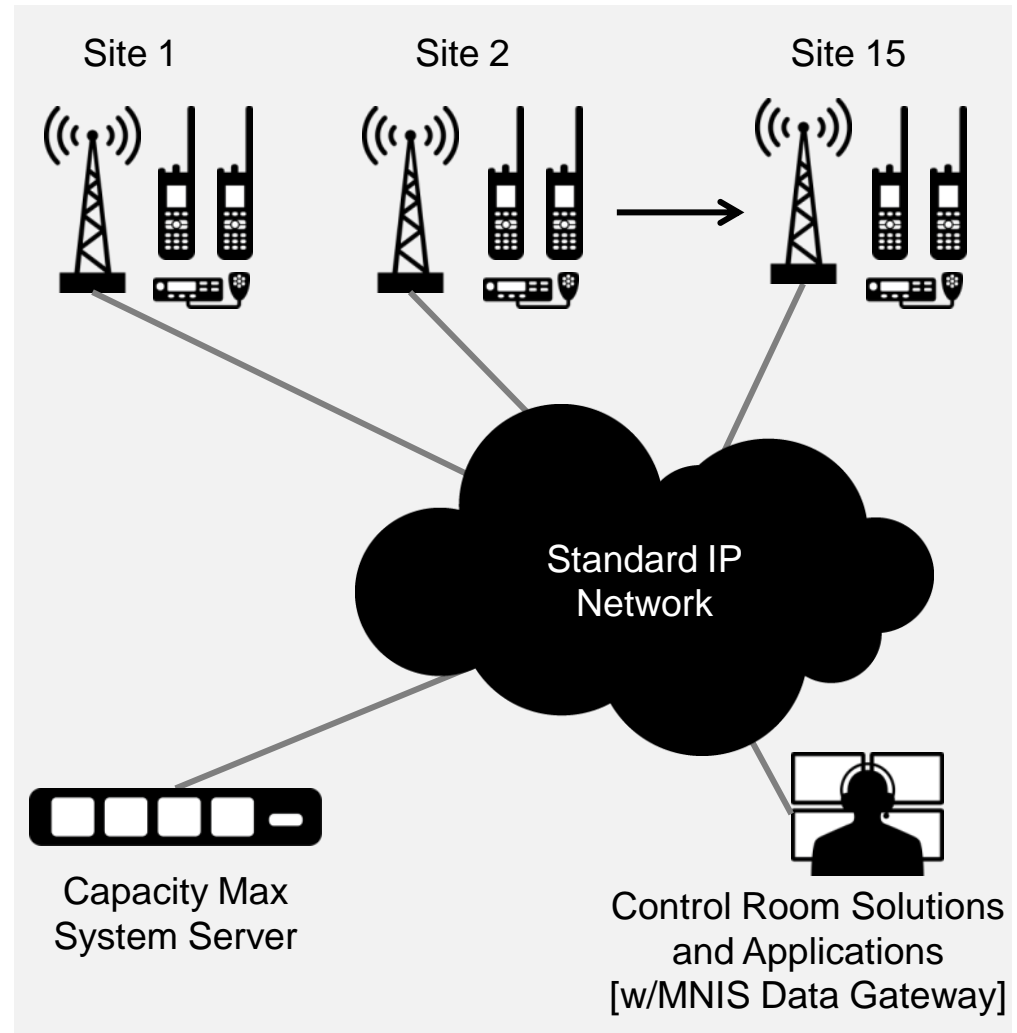


Efficient operation

Flexible deployment

Scalable architecture

- Single system-level server for control and management
- Up to 15 voice and data repeaters/site
- Up to 6 additional data revert repeaters/site
- Centralised gateways for Control Room Solutions and Applications

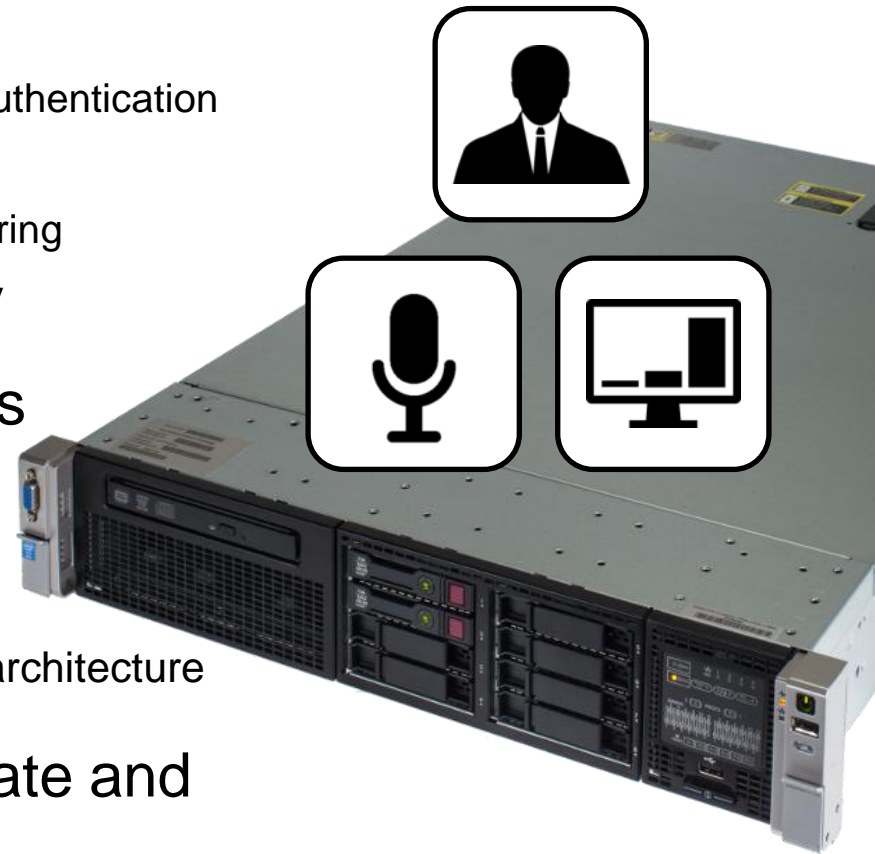


*Standardised low traffic call model

CAPACITY MAX SYSTEM SERVER



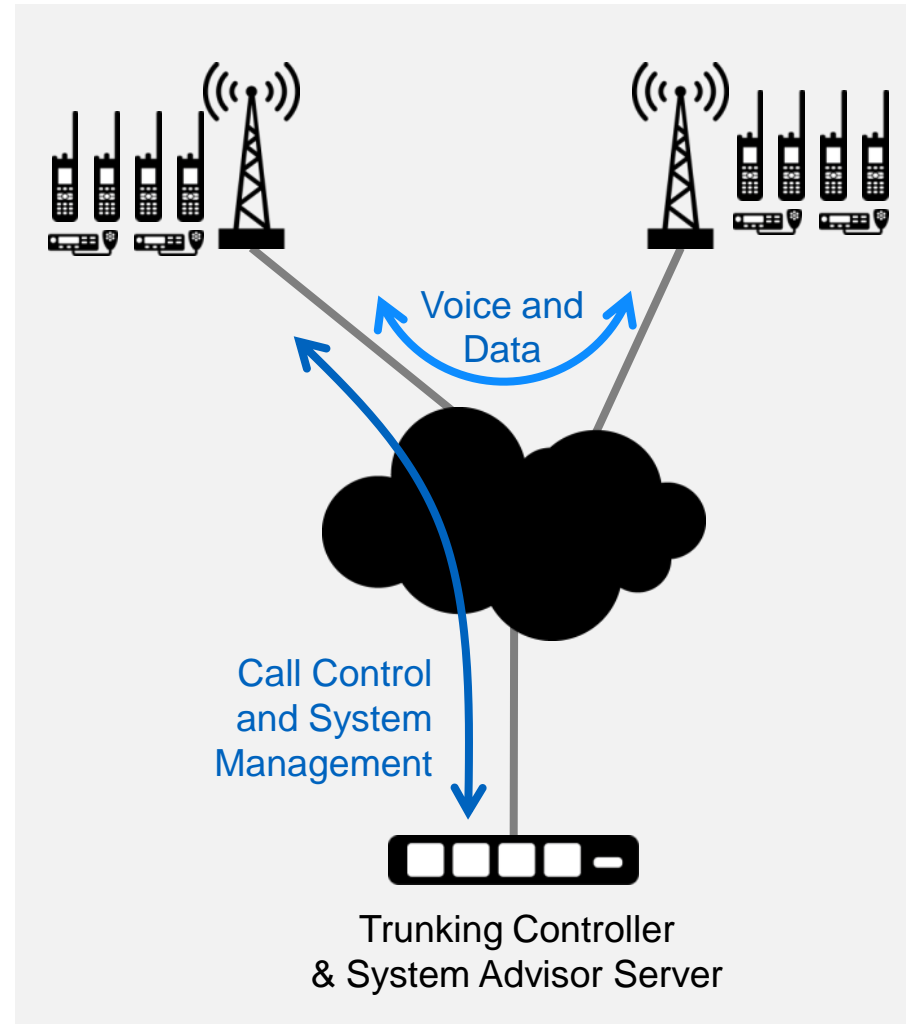
- Contains the system-level functions:
 - Trunking Controller:
 - Resource Mgt, Call Control, Registration, Authentication
 - System Advisor Server
 - System Fault Management and Call Monitoring
 - MNIS Voice/Radio Command (VRC) Gateway
- Supports up to 100 voice talkpaths
 - Expansion servers may be provisioned
- Provides high availability platform
 - Includes dual power supplies and RAID disk architecture
- Includes embedded software update and backup/restore application



EFFICIENT, LOGICAL ARCHITECTURE



- Centralised control, distributed traffic
 - Reduces bandwidth requirement at the controller site
 - Reduces traffic latency
 - No requirement for individual site controllers
- Easy to deploy, optimise and expand
- Standard IP network
 - No requirement for multicast
 - No requirement for specialized interconnection



MULTI-LEVEL RESILIENCY



SERVER RESILIENCY

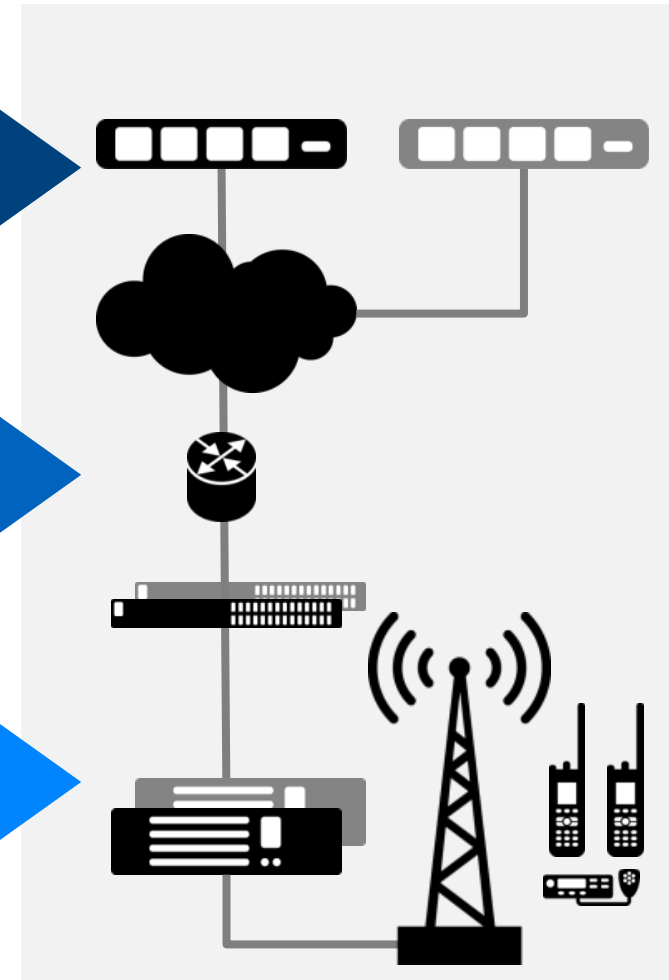
- Optional redundant server, geographically-separated if required
- If no controller is available, sites will function autonomously

IP SITE NETWORK RESILIENCY

- Optional second switch per site

SITE REPEATER ROLLOVER

- Control channel will rollover on failure (up to 4 channels)
- Redundant control channel repeater can be provisioned at each site



NO SINGLE POINT OF TRUNKING FAILURE

HIGHLY SECURE



- All subscribers are securely authenticated
 - Physical serial number, ID and key
 - Can configure individual access controls and restrictions
 - Remote disable / re-enable, with location tracking while disabled
- All voice and data traffic within the Capacity Max system is encrypted
 - Radio to Radio
 - Radio to Console (voice)
 - Radio to Telephony Server
 - Radio to Data Gateway (data)
- Architecture includes VPNs and support for firewalls



HIGH PERFORMANCE



Capacity Max is optimised for the real world

- Responsive system access
- Robust operation under load
- Efficient mobility across sites
- Urgent calls/audio get through fast



Fast System
Access Time

Improved Late
Entry

Enhanced
Registration

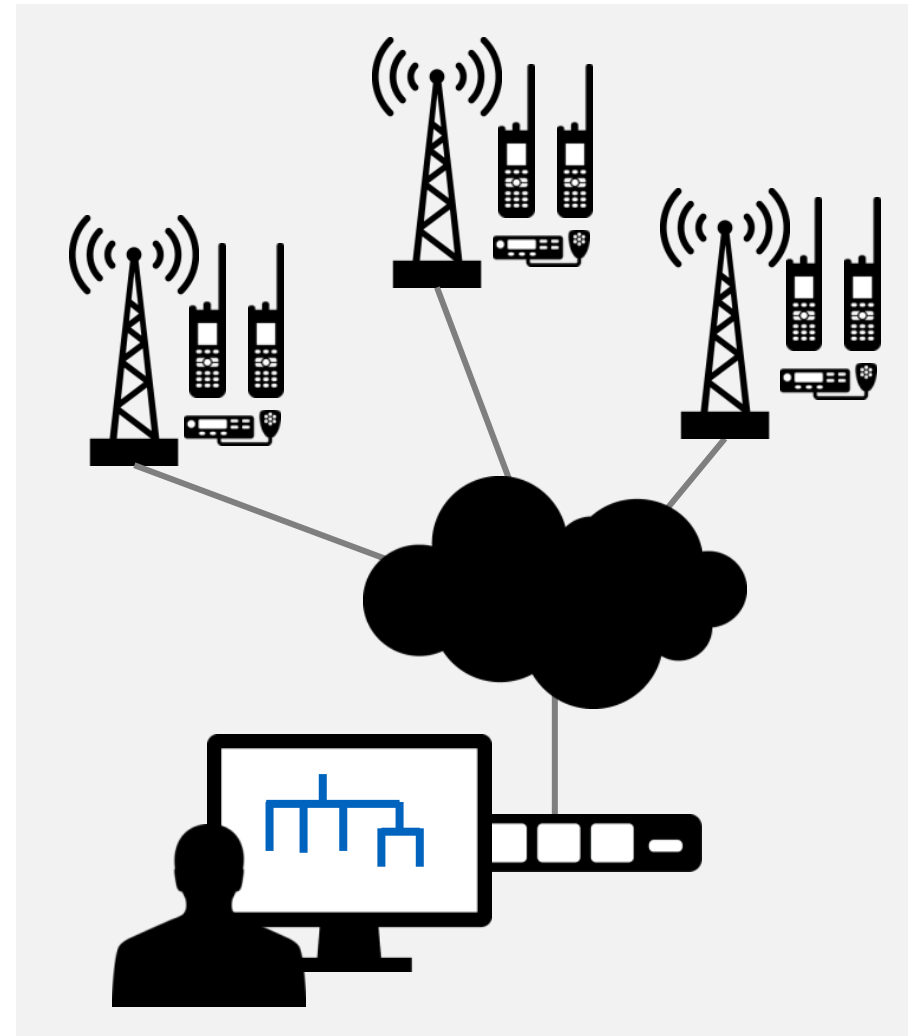
Voice Interrupt
and Pre-emption

Optimised
Roaming

MANAGEMENT AND MONITORING



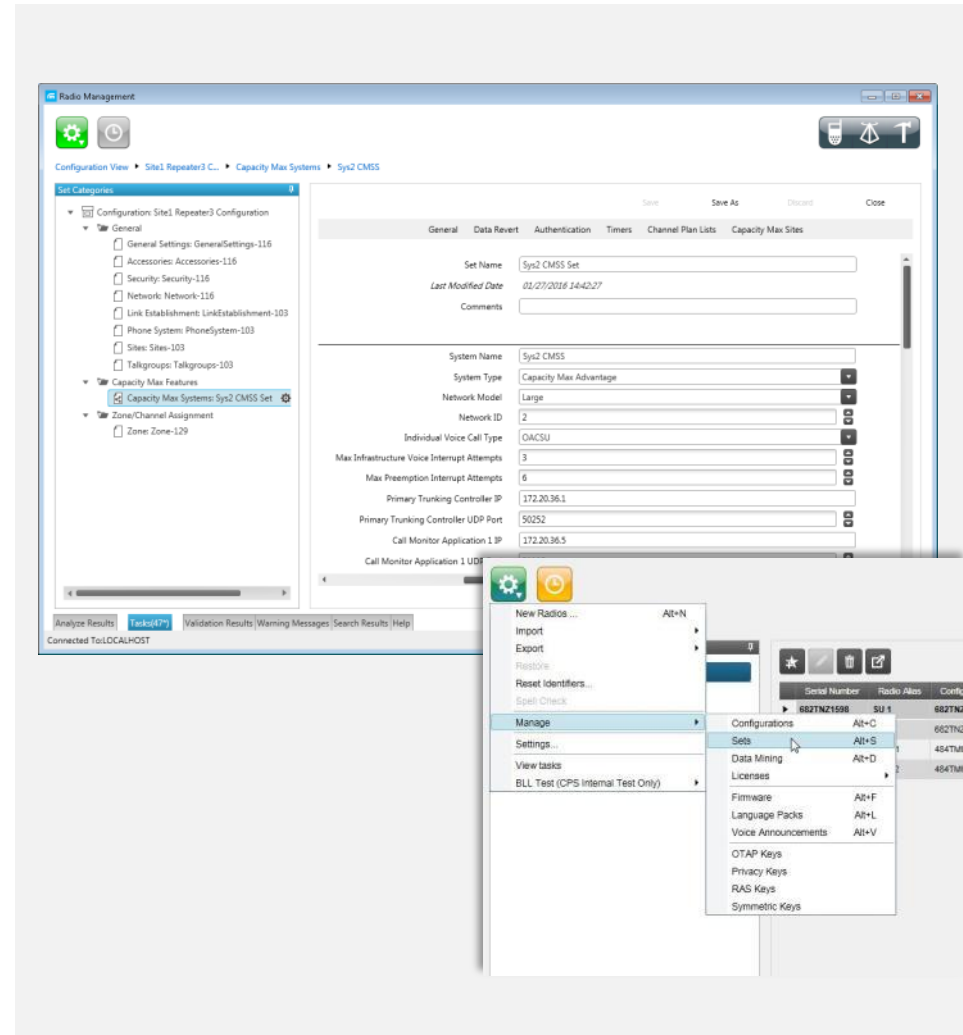
- Centralised Configuration Management
 - **Radio Management 2.0**
 - Logical structure of system, infrastructure, and devices
 - Generates repeater and radio codeplugs
- Centralised Fault / Performance Management
 - **System Advisor**
 - Alarm and event management
 - Real-time call monitoring
- Detailed Performance Management
 - **SmartPTT PLUS**
 - **TRBOnet PLUS**
- Battery Management
 - **IMPRES Over-the-Air Battery Management**
- Infrastructure Management
 - **Repeater Webpage Interface**
 - Provides direct view of repeater status information



RADIO MANAGEMENT 2.0



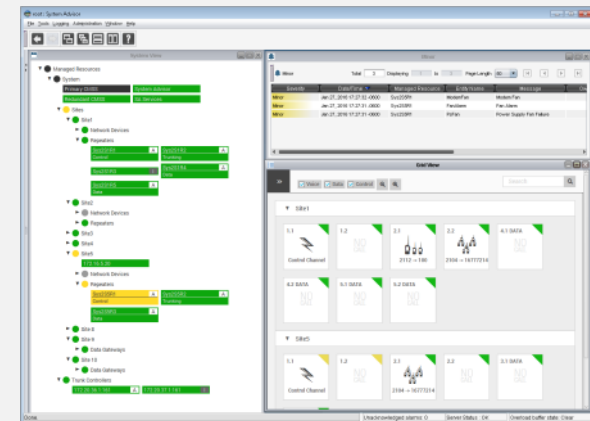
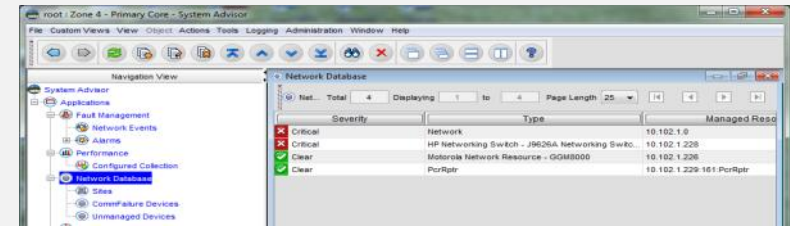
- Professional system configuration management
 - Radio and infrastructure programming, with all information stored in database on a central server for faster, repeatable, low error programming
 - WiFi and/or over-the-air programming for radio no-touch updates and IP-network based programming for repeaters and the CMSS
- Delivers improved capability
 - Configuration of radios, repeaters, gateways, and controllers
 - License management for all features, including those on the CMSS
 - Can partially auto-generate radio and repeater codeplugs



SYSTEM ADVISOR



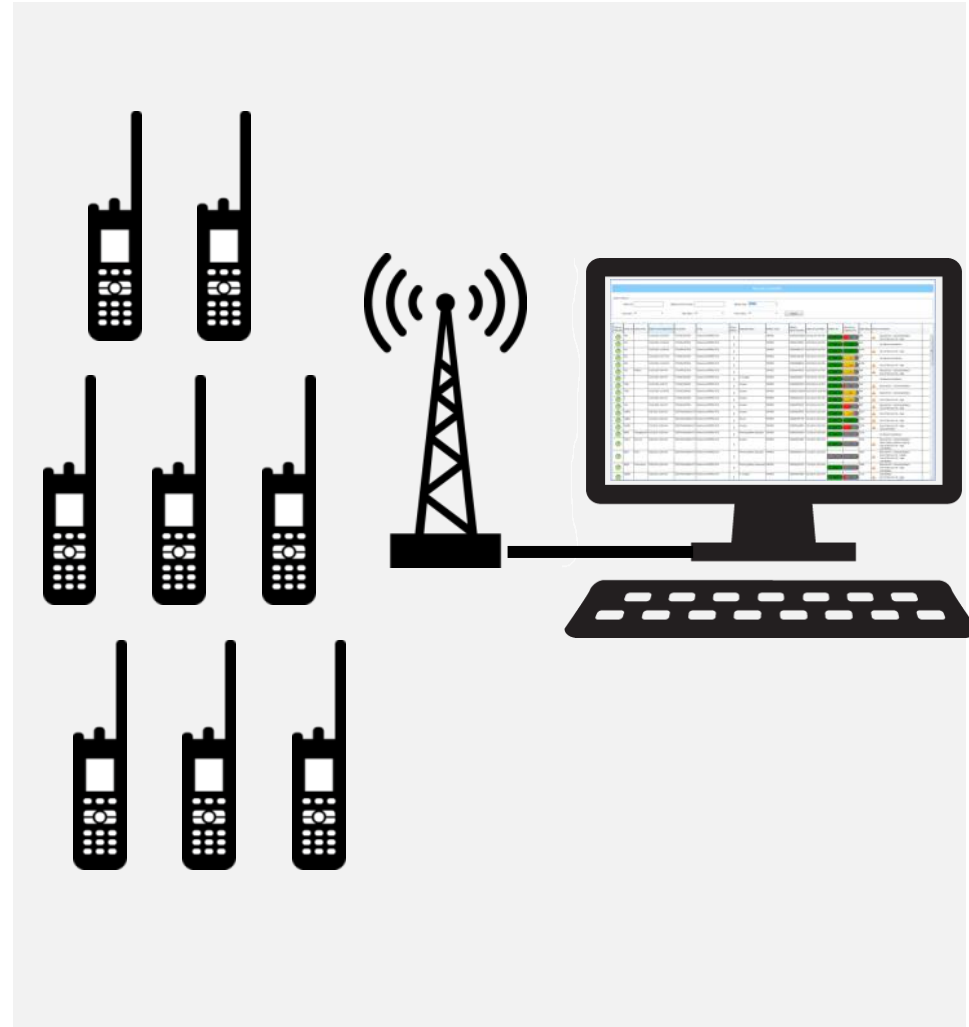
- Comprehensive fault management
 - Optimized for use with radio systems providing intuitive views of system health
 - Provides details status of all devices in the Capacity Max infrastructure
 - Provides multiple views and filters of faults to quickly identify and isolate problems
- Integrated call activity monitor
 - Critical real-time visual monitor of channel utilization
 - Reduces effort required for troubleshooting of performance issues



IMPRES BATTERY MANAGEMENT



- Collects battery data automatically, even while radios are in use
- Generates long-term records:
 - Battery performance
 - Charge history
 - Reconditioning history
- Allows early prediction of battery end-of-life
- Enhances battery traceability and user accountability



SUPPORTED PRODUCTS



EXISTING MOTOTRBO™ PRODUCTS SOFTWARE UPGRADABLE TO CAPACITY MAX



**DP3441/
DP3441e**



DP4400
DP4401



DP4600
DP4601



DP4800
DP4801



DP4401 Ex



DP4801 Ex



**SL4000/
SL4000e
SERIES**



DM4400
DM4401



DM4600
DM4601

DM4000/DM4000e SERIES



DM4000
HHCH



SLR8000



MTR 3000



SLR 5000 Series

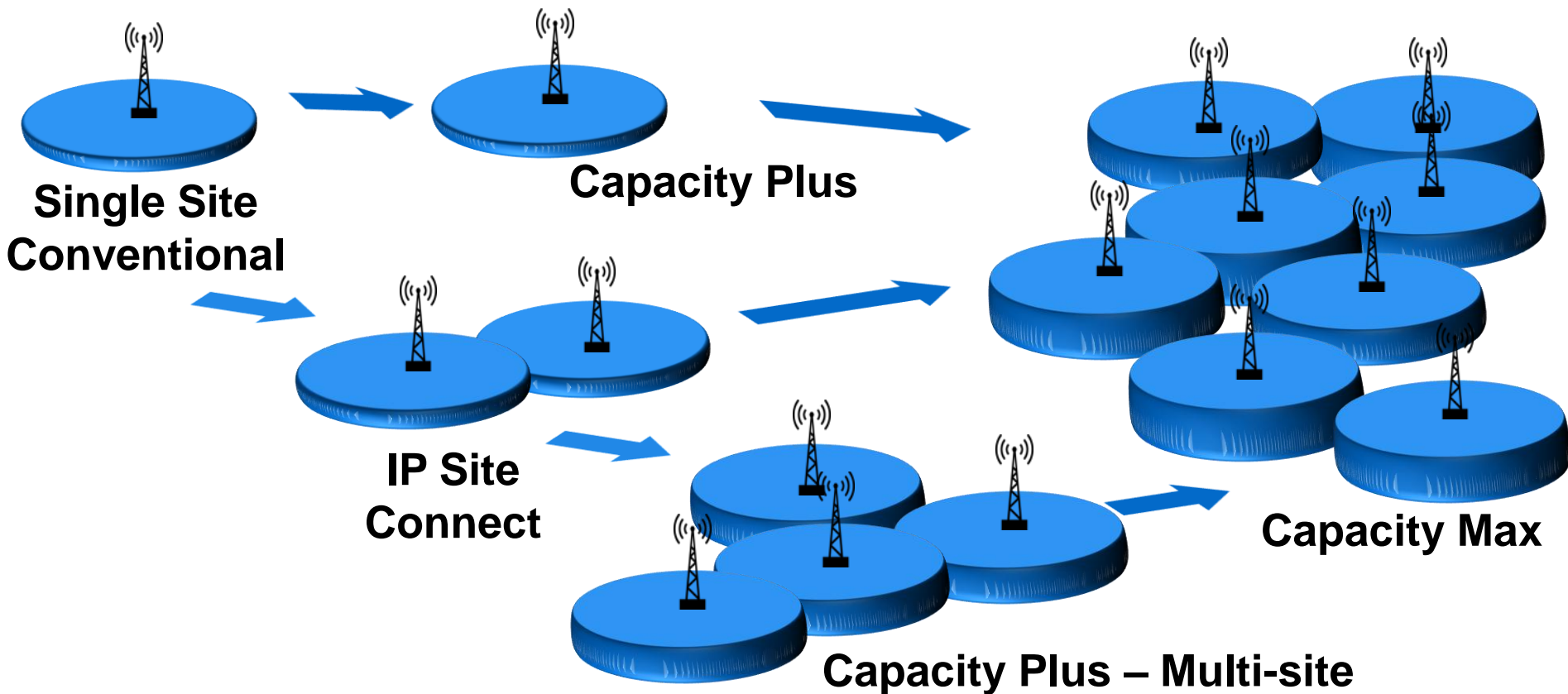


**DR3000 Series
(NOTE: 32 MB version only)**

SMOOTH MIGRATION



- MOTOTRBO systems are simple and scalable
- Migration to Capacity Max is straightforward
- Your investment is safe



SYSTEMS COMPARISON - SUMMARY



		IP SITE CONNECT	CAPACITY PLUS (SINGLE/MULTI SITE)	CAPACITY MAX	CONNECT PLUS
Scale	Max Users/Site	200	1600	3000	3000
	Sites	1-15	1-15	1-15	1-250
	Channels/Site (Traffic + Data Revert)	2 + 0	16 + 24 (Max 20)	29 + 12	29
Architecture	System Type	Conventional	Trunking	Trunking	Trunking
	Controller	-	No	Centralised	Per Site
	Controller Redundancy	-	-	Yes	Yes
	Control Channel	No	Rest Channel	Dedicated Channel	Dedicated Channel
Security	Subscriber Access Control	No	No	Yes	Yes
	Subscriber Authentication	RAS	RAS	Yes	Yes
Features	Transmit Interrupt	Yes	Yes	Yes	No
	Remote Monitor	Yes	Yes	Yes	Yes
	Queuing (Levels)	No	No	Yes (10)	Yes (8)
	Radio Enable/Disable (Stun/Revive)	Yes	Yes	Yes	Yes

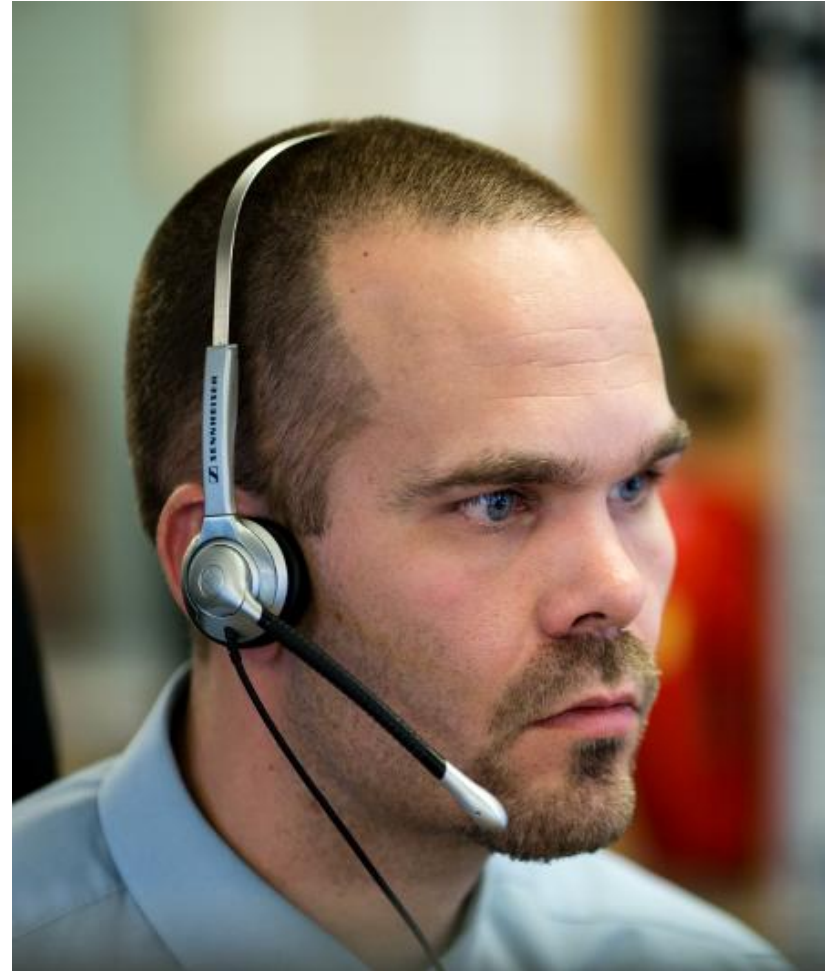


DISPATCH CONSOLES & TELEPHONY



Capacity Max will support all MOTOTRBO dispatch consoles:

- **SmartPTT PLUS**
 - Advanced wireline solution from Elcomplus LLC
 - Sold and supported by Motorola Solutions
- **TRBOnet PLUS**
 - Advanced wireline solution from Neocom Ltd
 - Sold and supported by Motorola Solutions
- **Telephony using Smart SIP technology**
 - Capacity Max supports centralised SIP telephony via SmartPTT PLUS & TRBOnet PLUS



APPLICATIONS



- Capacity Max will support the broad range of applications of the MOTOTRBO ADP program
 - Specific details will be communicated in the Applications Catalogue (updated quarterly)
- The WAVE workforce connectivity solution will be supported in an upcoming future release



FEATURE CATEGORIES



DMR Tier III Core Features

Defined and
included in IOP

Registration
Group Call
Private Call
Group Broadcast Call
Roaming
Short Text Message
Queue Call

Multisite (optional)
AES (optional)

DMR Tier III Additional Features

Defined but not
included in IOP

All Call
Emergency Alert
Emergency Call
Dispatch Call
Telephony Call
Packet Data
Text Message
(Standard)
Radio Check
Radio Stun/Revive
Radio Monitor
Key-based Authentication
Voice Interrupt
Call Pre-emption
Mass Registration
Late Entry
Talkgroup Affiliation

MOTOTRBO Radio Features

MOTOTRBO
value-add

Emergency Call, Voice to
Follow
Emergency Search Tone
Extended Text Messaging
Telemetry
Over-the-Air Programming
Over-the-Air Battery
Management
Enhanced Roaming
User-Selectable Audio
Profiles
Voice Announcement
Text to Speech
IMPRES Energy
IMPRES Audio
Acoustic Feedback
Suppressor
Trill Enhancement
Bluetooth Audio and Data
Man Down and Lone
Worker

...

Capacity Max Infrastructure Features

Capacity Max
value-add

Critical Site Assignment
Site Restriction
Subscriber Access Control
All Start
Control Channel Repeater
Redundancy
Call Queue Priority (via
SAC)
Discreet Listening
Enhanced Channel Access
Remote Repeater
Programming
Wireline Application
Interface

...

...

Capacity Max System Features

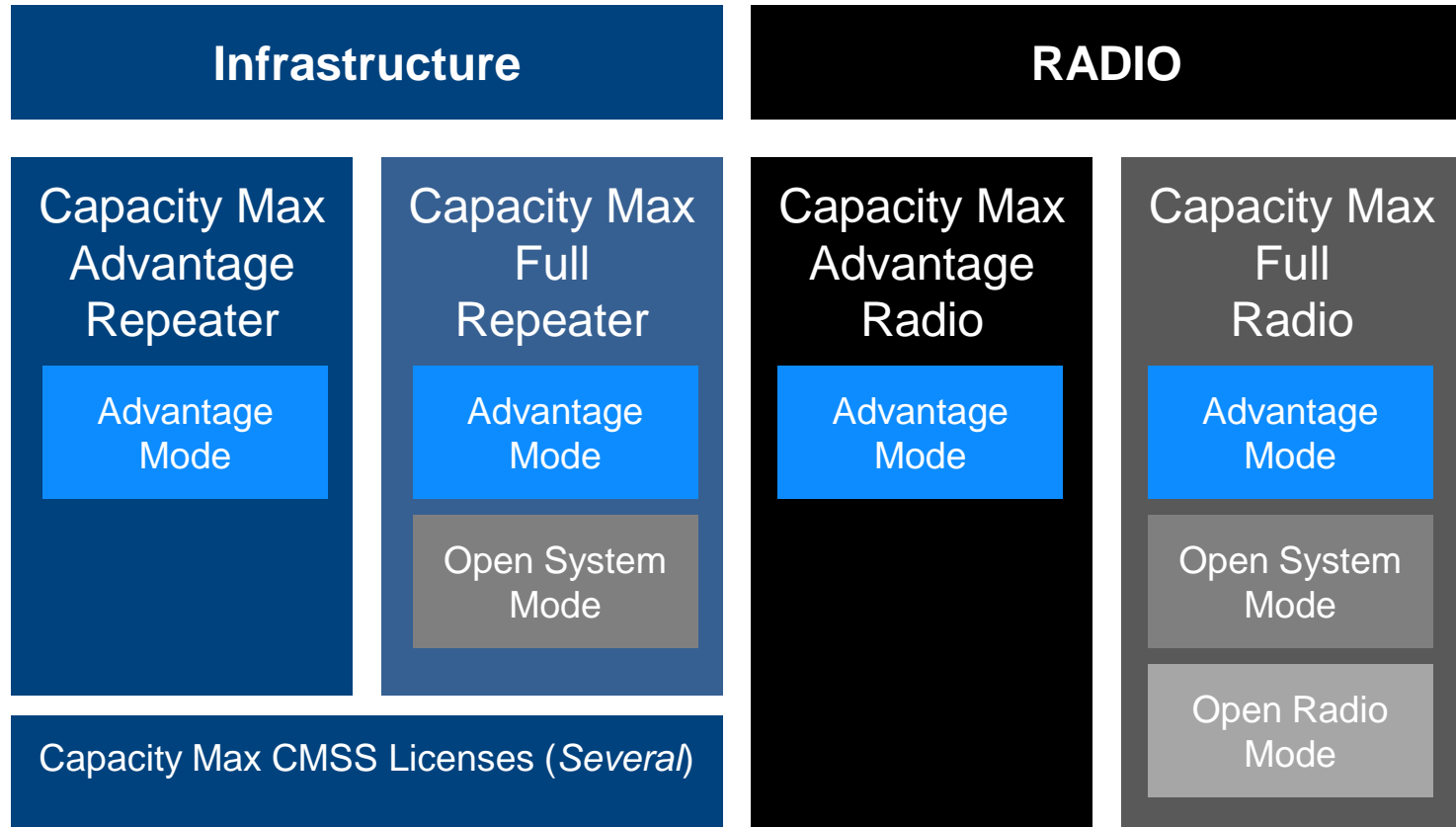
Capacity Max
value-add

Enhanced Channel Access
Subscriber Authentication
Site and Channel
Extensibility
Site Trunking
Enhanced Registration
Advanced Late Entry
Call Alert
High Efficiency GPS
Indoor Location Tracking
Data Revert

...

...

CAPACITY MAX LICENSING



Advantage Mode: MOTOTRBO Capacity Max infrastructure, MOTOTRBO radios

Open System Mode: MOTOTRBO Capacity Max infrastructure, Mixed radios

Open Radio Mode: 3rd party infrastructure, Mixed radios

CAPACITY MAX OPERATING MODES



**Advantage
Mode**

Infrastructure: MOTOTRBO Capacity Max
Radios: MOTOTRBO

**Open System
Mode**

Infrastructure: MOTOTRBO Capacity Max
Radios: Mixed MOTOTRBO and 3rd-Party

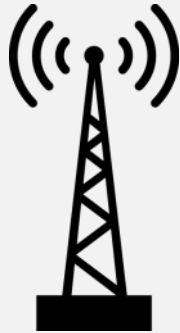
**Open Radio
Mode**

Infrastructure: 3rd-Party
Radios: Mixed MOTOTRBO and 3rd-Party

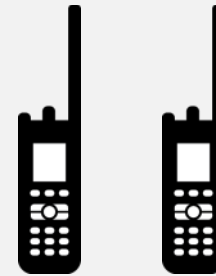
CAPACITY MAX ADVANTAGE MODE



Capacity Max Infrastructure



MOTOTRBO Radios



**DMR Tier III
Core
Features**

**DMR Tier III
Additional
Features**

*No 3rd-Party Radio
Interoperability*

**MOTOTRBO
Radio
Features**

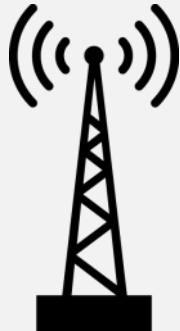
**Capacity Max
Infrastructure
Features**

**Capacity Max
System
Features**

CAPACITY MAX OPEN SYSTEM MODE



Capacity Max Infrastructure



MOTOTRBO + 3rd-Party Radios



**DMR Tier III
Core
Features**

**DMR Tier III
Additional
Features**

**MOTOTRBO
Radio
Features**

**Capacity Max
Infrastructure
Features**

**Capacity Max
System
Features**

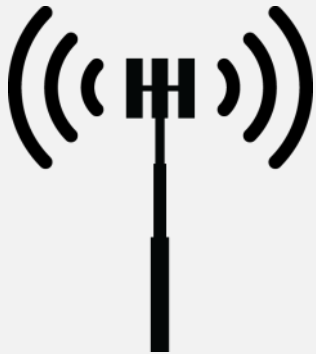
*(Interoperability guaranteed
between MOTOTRBO radios)*

*(Only available for MOTOTRBO
radios, with feature limits)*

CAPACITY MAX OPEN RADIO MODE



3rd-Party Infrastructure



MOTOTRBO + 3rd-Party Radios



**DMR Tier III
Core
Features**

**DMRA IOP
Certified**

**DMR Tier III
Additional
Features**

*(Interoperability
may be possible)*

**MOTOTRBO
Radio
Features**

SERVICE PACKAGES FOR CAPACITY MAX



PACKAGES	ESSENTIAL	ESSENTIAL PLUS
5 YEARS COVERAGE	<input checked="" type="checkbox"/>	<input checked="" type="checkbox"/>
REMOTE TECHNICAL SUPPORT: 9AM-5PM CET, MON-FRI	<input checked="" type="checkbox"/>	<input checked="" type="checkbox"/>
NON TECHNICAL TELEPHONE SUPPORT: 9AM-5PM CET, MON-FRI	<input checked="" type="checkbox"/>	<input checked="" type="checkbox"/>
SOFTWARE RELEASES ¹	<input checked="" type="checkbox"/>	<input checked="" type="checkbox"/>
INFRASTRUCTURE REPAIR ²		<input checked="" type="checkbox"/>

- (1) Software releases comprises of minor and major releases and update subscriptions
(2) Infrastructure repair includes server and networking equipments

CAPACITY MAX: SUMMARY



Next-Generation Trunking Solution

High performance built on real-world experience



Complete Control

Comprehensive configuration and optimisation



Smooth Migration and Scalability

Careful integration with MOTOTRBO systems portfolio



DMR Compliant

Interoperability with 3rd-party infrastructure and radios