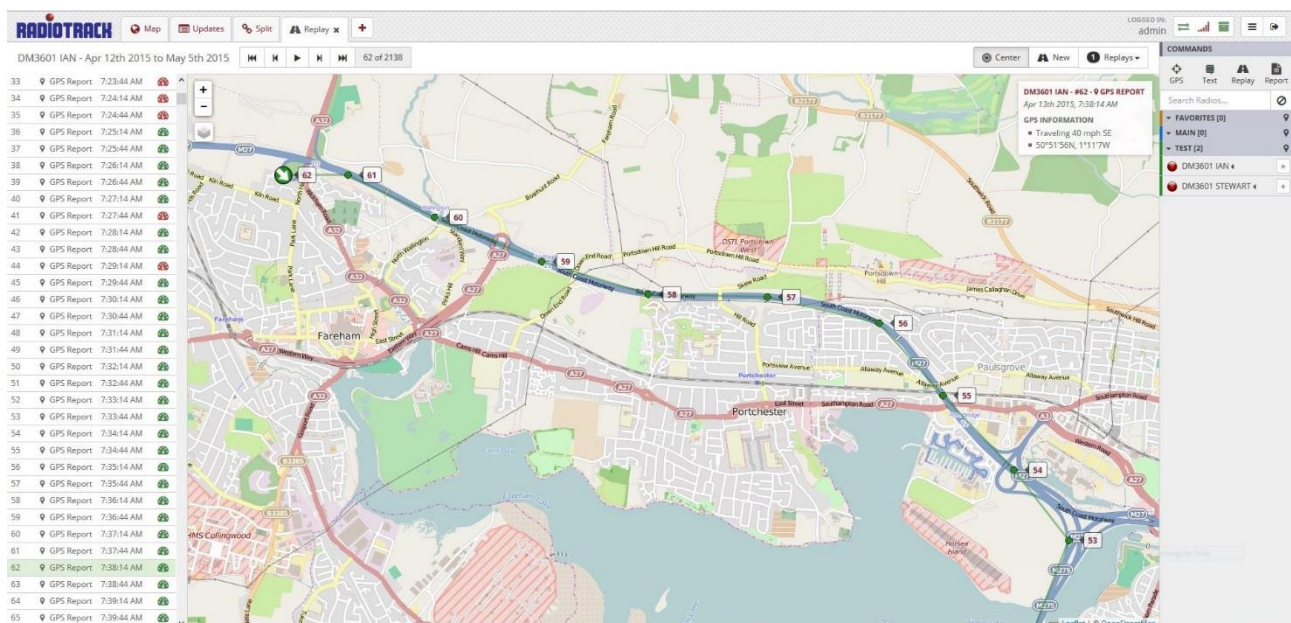




## Fleet Management Solution

RadioTrack's fleet management solution offers outstanding fleet operation tools to both monitor the real-time locations of fleets and measure their performance, all within an easy to master web interface system. With the use of the flexible interface and reporting tools, it enable operations personnel to evaluate and maximise their business' operational performance, communicate effectively with workers and enhance safety.

RadioTrade has teamed up with Tallysman Wireless to launch this new hosted application, providing all of these features with no up-front Capex cost, just simple, low, monthly payments. The RadioTrack application is ideal for use in all fleet management situations, transportation, campus management, electric/gas utilities, waste management, quarries and alarm monitoring.



The RadioTrack system is simple to use. It offers the ability to manage radio fleets using a responsive web browser interface using any Internet capable device, meaning users can log in and manage all assets even when away from the office.

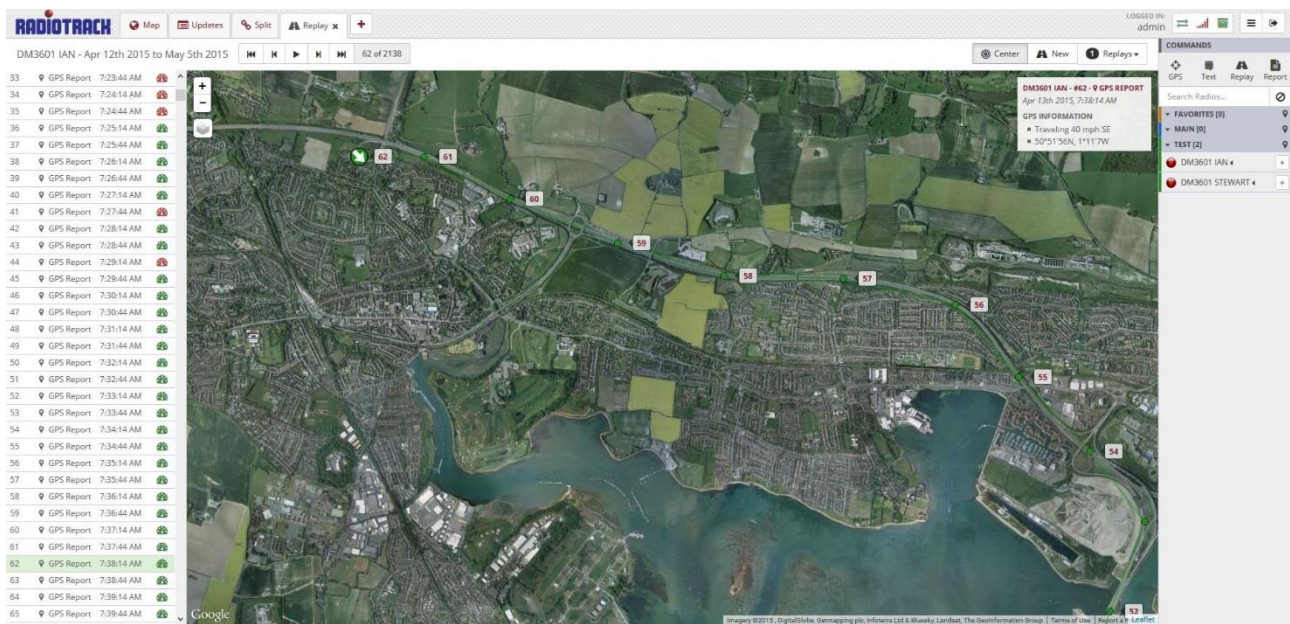
RadioTrack is easy to implement and deploy. The application is easily configured to fit any preconfigured radio system including IP Site Connect, Capacity Plus, Linked Capacity Plus, Connect Plus and also simple simplex systems that do not use repeaters. The radios will need to be GPS capable, or with the Motorola DM series units it is possible to provide an upgrade cost to add the GPS capability.

Connecting the radio system to the hosted server can be done a number of ways and uses the Internet as a bearer. The RadioTrack PC gateway allows a simple PC/Radio combination to listen to the radio network and send GPS data back to the server over the Internet. Other options include an NAI direct connection. If connecting the gateway or NAI data to the Internet is difficult, then a 4G solution is also possible.

System configuration will be carried out by a RadioTrack Dealer. Radio identities are added to the server and log-in details are provided for the user to access the software and administration rights are set per user allowing varying levels of access to suit differing requirements within an organisation.



RadioTrack can be implemented with no large, upfront Capex costs. RadioTrack are hosting the service, there is no need to purchase any expensive server infrastructure or the skilled labour to manage it. RadioTrack will take care of the system set-up and users may purchase this from a RadioTrack Dealer by signing up to a simple monthly subscription, that although is contract based, can be obtained on a short-term basis, so users may try the system and determine its value before committing further.



## Features

- Web browser interface, responsive to any Internet capable device
- Real time positioning on Google maps
- Multiple fleet management
- Route replay & comprehensive reports
- Automatic log retrieval
- Archived data
- Inbuilt text, status and email messaging
- Emergency alarms & protocols for out of range situations
- Geo-fences & reverse geocoding
- Redundancy
- Configurable settings
- Online help section
- Hosted application with small monthly payments



## Contrail Tracking

By using the Motorola generic option board or the SPRITE telematics box, both available through RadioTrade, breadcrumb trails with up to 5 second location pings can be achieved. GPS data is

stored and compressed before being sent as a single data string and thus reduces the necessity for additional radio airtime. The smart sequencing technology within the software means the RadioTrack system knows it has missed a GPS message and will retrieve it from the SPRITE telematics box at the earliest convenience, so no location information is lost. The reverse geocoding of GPS latitude/longitude co-ordinates offers a superior level of tracking, providing location accuracies down to the street corner, stop arrival and more, allowing effective auditing of vehicle routes and locations.

**Top 5 Busiest**  
#1 - DM3601 IAN - 633 records

**Top 5 Fastest**  
#1 - DM3601 IAN - 76 mph

**Top 5 Mileage**  
#1 - DM3601 IAN - 34.4 miles

### DM3601 IAN -- 633 Records from 6:55 AM to 9:08 AM

First location: 50.82444, -1.07631 at 6:56 AM  
Last location: 51.27615, -1.10547 at 9:08 AM  
Distance travelled 34.4 miles

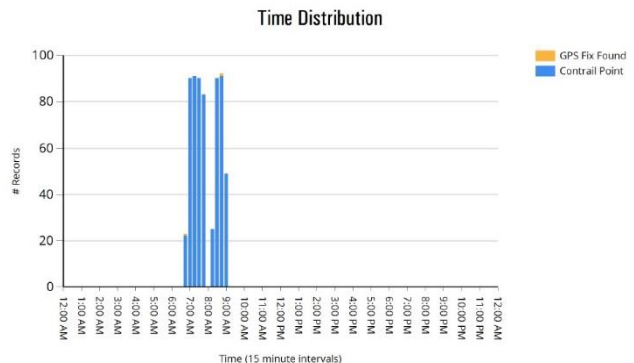
Contrail Point: 631  
GPS Fix Found: 2

## Vehicle Reports

Personally preconfigured statistical reports are automatically generated on a daily basis and are available for fleets and individual vehicles. Reports can be automatically saved or emailed to the necessary recipients and can include information such as speeding alerts, geofence timings, emergencies, busyness, first and last locations and overall summaries. It is also possible to search through all historical data, on all devices in the server database, providing the ability to check and analyse years of archived data.

## Daily Summary Report

For radio DM3601 IAN on May 6, 2015  
[Generated on May 6, 2015 11:27 AM, GMT Standard Time]



## Communication & Safety

Communication using RadioTrack is versatile. Text messages can be sent from the web interface with live confirmations of delivery. It is also possible to have an email inbox set up for a radio/group which allows emails to be received by the server and passed onto the radio or group in the form of a text message. RadioTrack enhances the safety of both personnel and assets. With the ability to locate employees, assets and valuable cargo, along with monitoring progress, it means that an emergency situation can be dealt with quickly and effectively. Geofencing within the software allows employers to set safe and dangerous areas on a map and to be notified by the application if these defined areas are breached. Geo-fencing can also be used to show vehicles that have gone off route and alarms can be raised.

For more information on this product please contact your local RadioTrack Dealer