

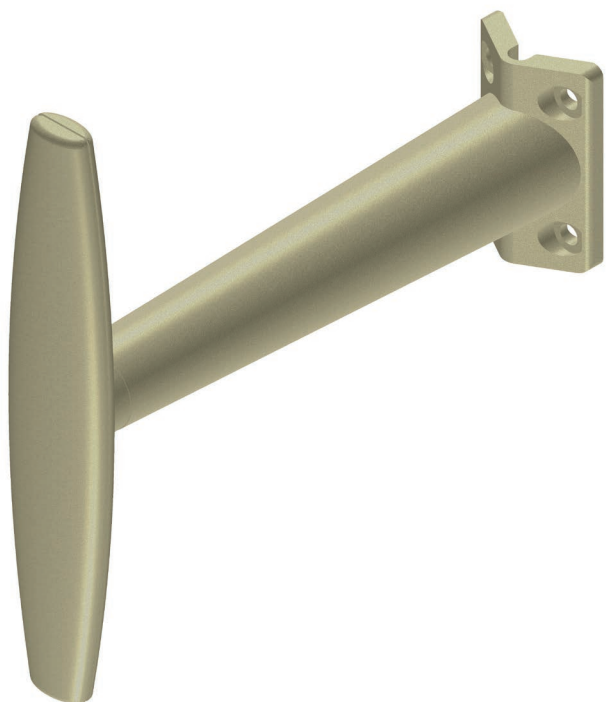
# Product Data Sheet

900MHz, 1800MHz & 3G UMTS  
Wall Mount Antenna

C/Note	Doc Issue	Date	Approval
01019	1	18.09.2013	J.J.

# GPRS & 3G UMTS

## Wall Mount Antenna

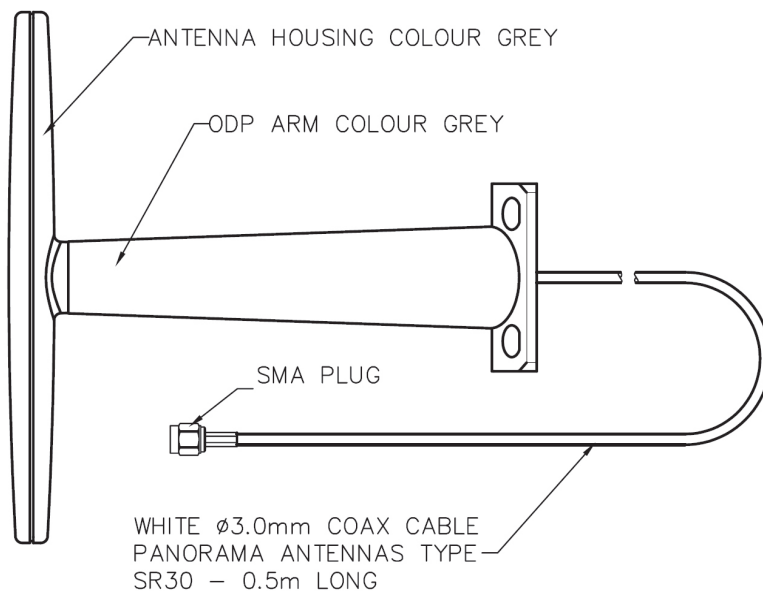
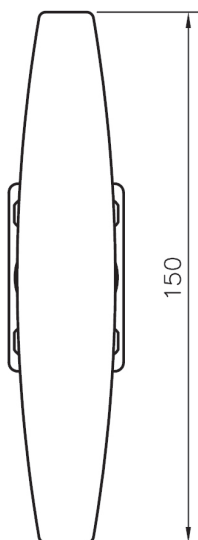
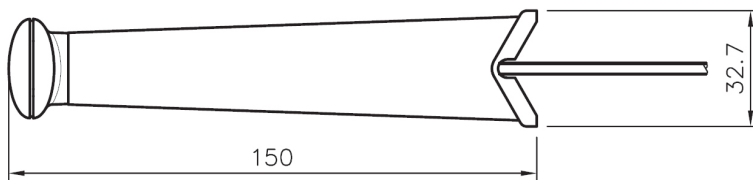


### ODP-9-18-3G

- Improves range of GSM/3G devices
- Easy installation
- Light weight solution

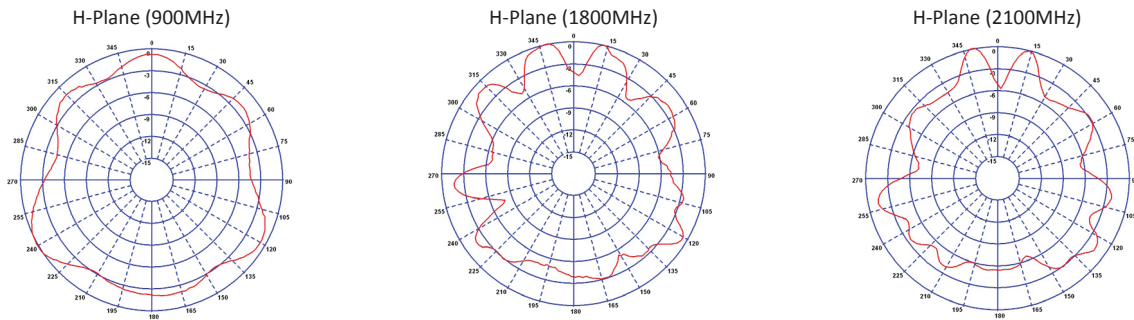
Wall mounted antennas can be used as a simple and cost efficient way of improving the range of a GSM network, transferring high network coverage from the outside of a building to the inside. They can also be used to ensure a better connection between machines due to improved antenna positioning.

#### Technical Drawing

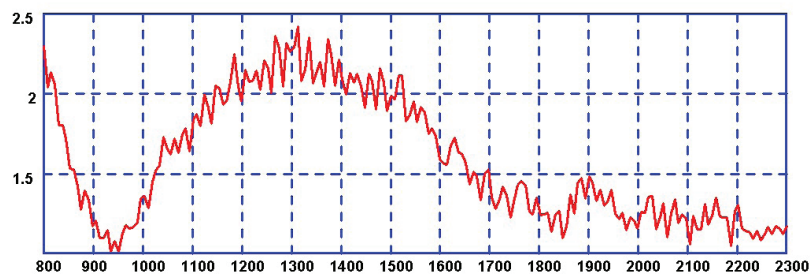


# GPRS & 3G UMTS

## Wall Mount Antenna



Typical VSWR



### Part No.

ODP-9-18-3G-05SP

### Electrical Data

Frequency Range (MHz)	890-960, 1710-1880, 1850-1990 & 1900-2170
Operational Band	AMPS800, GSM1800, PCS1900 & 3G UMTS
Peak Gain: Isotropic	2dBi
Compared to ¼ wave	0dB
VSWR	2:1
Polarisation	Vertical
Pattern	Omni directional
Impedance	50Ω
Max Input Power (W)	25W

### Mechanical Data

Dimensions (mm)	Height	150 (5.9")
	Width	32.7 (1.28")
Off-Set from wall (mm)		150 (5.9")
Operating Temp (°C)		-40°/+80°C (-40°/176°F)
Colour		Grey

### Cable Data

Type	SR30
Length (m)	0.5 (19.6")
Colour	White
Diameter (mm)	3 (0.11")
Termination	SMA plug

**Panorama Antennas Ltd**

Frogmore, London, SW18 1HF, United Kingdom

T: +44 (0)20 8877 4444

F: +44 (0)20 8877 4477

E: [sales@panorama-antennas.com](mailto:sales@panorama-antennas.com)

[www.panorama-antennas.com](http://www.panorama-antennas.com)

Waiver: The data given above is indicative of the performance of the product/s under particular conditions and does not imply a guarantee of performance. These specifications are subject to change without notice.

Copyright © Panorama Antennas Ltd. All rights reserved.

**PANORAMA  ANTENNAS**